

YEAR 2007

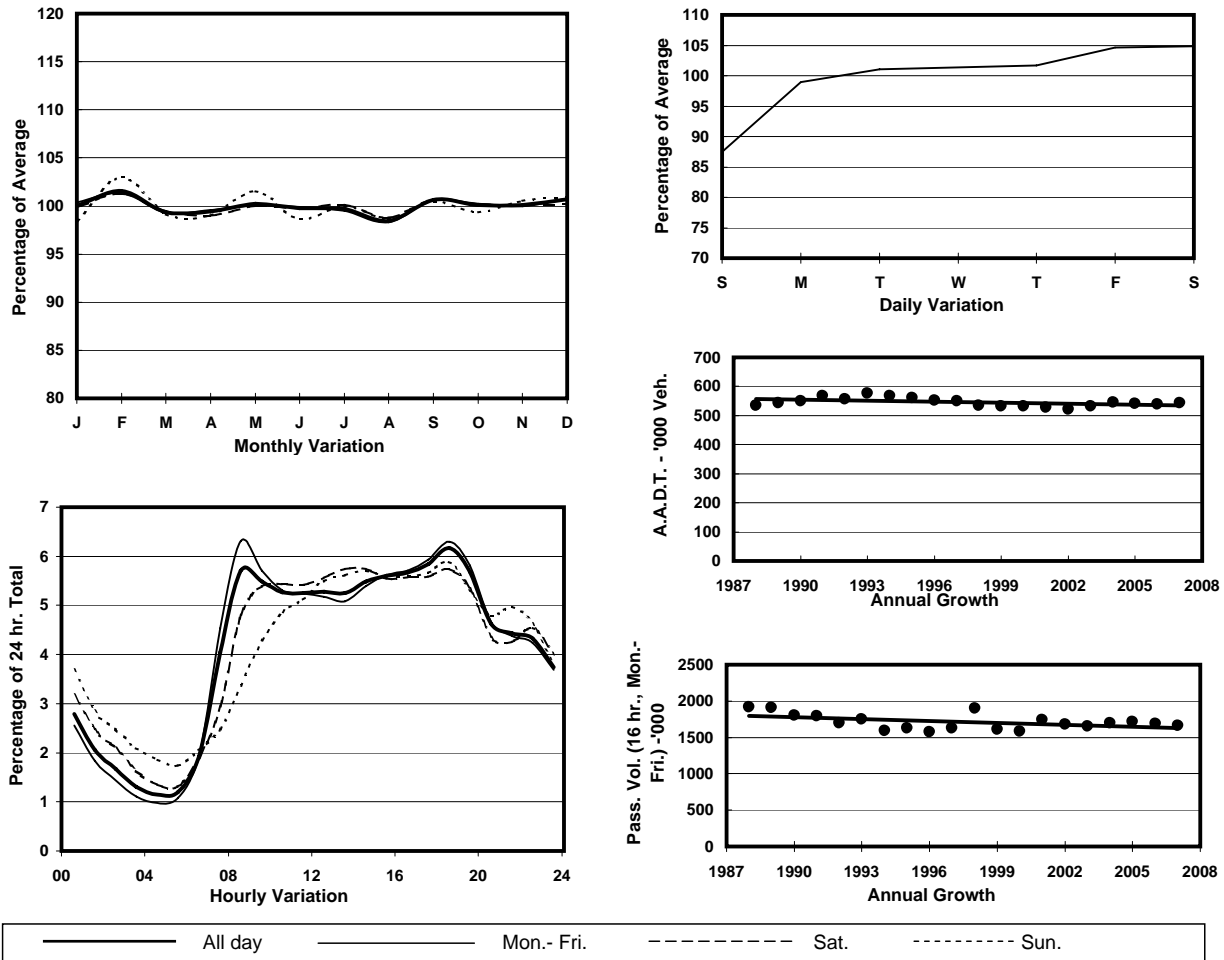
Location

Screenline A-A(Urban Railway Line)

Stations on Cordon/Screenline

3001, 3002, 4202, 4203, 4204, 4205, 4206, 4207, 4208, 4221 and 4401

1. TRAFFIC FLOW VARIATION AND GROWTH



2. TRAFFIC CHARACTERISTICS (BY DIRECTION)

Parameter	All - Day	Mon. - Fri.	Sat.	Sun.
EAST BOUND				
A.A.D.T.	284450	290410	301310	251110
R 12 / 24 - %	64.2	65.4	62.9	58.6
R 16 / 24 - %	83.8	85.1	81.6	78.9
AM Peak Hour	0800-0900	0800-0900	0900-1000	0900-1000
One-way flow at AM peak hour	15340	17250	15630	10480
T - % (AM)	-	12.7	-	-
PM Peak Hour	1800-1900	1800-1900	1800-1900	1800-1900
One-way flow at PM peak hour	17540	18340	17490	14410
T - % (PM)	-	9	-	-
Prop.of commercial vehicles - 16 hr.	-	11.1	-	-
WEST BOUND				
A.A.D.T.	259160	265030	272630	228310
R 12 / 24 - %	66.1	67.3	64.3	60.9
R 16 / 24 - %	84.6	85.8	82.5	80
AM Peak Hour	0800-0900	0800-0900	0900-1000	0900-1000
One-way flow at AM peak hour	15720	17760	15380	10100
T - % (AM)	-	10.6	-	-
PM Peak Hour	1800-1900	1800-1900	1800-1900	1800-1900
One-way flow at PM peak hour	15960	16610	15540	13850
T - % (PM)	-	8.1	-	-
Prop.of commercial vehicles - 16 hr.	-	10.1	-	-

3. OTHER INFORMATION AND COMMENT

4. Vehicle classification and occupancy - Monday to Friday

Time		Class of vehicle									
		Motor	Private	Taxi	Private	PLB	Goods veh.		Non	Fr. Bus	
		Cycle	Car		LB		Light	M & H	Fr. Bus	SD	DD
0700-0800	Pro	4.3	22.4	31.8	2.6	5.7	16.2	5.0	6.8	0.1	4.9
	Ocp	1.1	1.4	2.0	5.8	10.9	1.5	1.3	11.3	8.6	42.1
0800-0900 Peak Hour	Pro	4.5	38.5	23.9	1.1	5.0	15.3	4.4	3.7	0.1	3.5
	Ocp	1.1	1.3	1.9	4.0	13.5	1.6	1.5	14.6	14.0	52.8
0900-1000	Pro	2.7	32.0	25.1	1.1	4.2	23.2	5.5	2.1	0.1	4.0
	Ocp	1.1	1.3	1.8	2.9	10.4	1.6	1.4	9.0	7.0	28.8
1000-1100	Pro	2.1	25.5	28.2	1.3	3.4	27.5	6.8	1.6	0.1	3.6
	Ocp	1.1	1.5	1.7	2.3	9.6	1.6	1.5	6.1	7.9	24.2
1100-1200	Pro	2.5	26.9	25.7	1.4	3.4	28.4	6.5	1.9	0.1	3.2
	Ocp	1.1	1.4	1.8	2.6	9.3	1.6	1.4	7.4	10.9	26.4
1200-1300	Pro	2.4	30.3	26.0	1.4	3.8	25.1	5.0	2.8	0.1	3.2
	Ocp	1.1	1.5	1.9	3.8	10.2	1.6	1.5	11.2	8.5	27.0
1300-1400	Pro	2.8	28.7	26.7	1.2	4.0	24.5	6.0	2.6	0.1	3.5
	Ocp	1.1	1.5	1.8	3.3	9.8	1.6	1.4	7.6	9.7	27.4
1400-1500	Pro	2.7	30.0	23.7	1.4	3.4	27.5	5.9	2.1	0.1	3.1
	Ocp	1.1	1.5	1.9	2.0	9.5	1.6	1.5	7.2	8.3	28.7
1500-1600	Pro	2.5	32.5	22.2	1.8	3.4	25.5	5.8	3.1	0.1	3.0
	Ocp	1.1	1.5	1.9	4.0	11.0	1.6	1.5	12.0	12.7	29.4
1600-1700	Pro	3.2	33.8	23.5	1.6	3.6	22.7	4.7	3.5	0.1	3.4
	Ocp	1.1	1.5	1.8	3.6	11.6	1.6	1.5	7.5	13.4	33.1
1700-1800	Pro	4.5	34.9	24.8	1.1	3.7	21.1	3.4	2.8	0.1	3.7
	Ocp	1.1	1.5	1.8	2.9	12.8	1.6	1.4	5.5	10.9	38.2
1800-1900	Pro	5.4	42.7	23.3	0.8	4.8	14.5	2.8	2.1	0.1	3.5
	Ocp	1.1	1.5	2.0	3.0	15.4	1.6	1.4	17.2	14.8	53.6
1900-2000	Pro	3.1	46.8	28.5	0.2	5.1	9.7	1.5	1.6	0.1	3.4
	Ocp	1.1	1.5	2.0	2.1	13.6	1.6	1.4	10.7	10.8	46.0
2000-2100	Pro	2.9	41.9	33.9	0.3	5.6	8.7	1.5	1.4	0.1	3.7
	Ocp	1.2	1.5	1.9	1.8	12.3	1.6	1.4	8.5	8.1	34.8
2100-2200	Pro	3.5	39.7	36.8	0.3	5.4	6.7	1.9	1.6	0.1	4.0
	Ocp	1.2	1.6	2.0	2.6	11.4	1.7	1.4	6.8	5.0	29.9
2200-2300	Pro	3.4	41.7	36.7	0.2	6.5	4.7	1.3	1.0	0.1	4.4
	Ocp	1.2	1.6	1.9	2.8	11.1	1.6	1.4	3.1	4.5	29.7
16 hours	Pro	3.3	34.4	27.1	1.1	4.4	19.2	4.3	2.5	0.1	3.6
	Ocp	1.1	1.5	1.9	3.4	11.7	1.6	1.4	9.9	9.7	35.2

Legend

- Pro.** Proportion of vehicles in % (Sum may not add up to 100% due to figure rounding)
- Ocp.** Average occupancy of vehicles
- M & H** Medium and Heavy